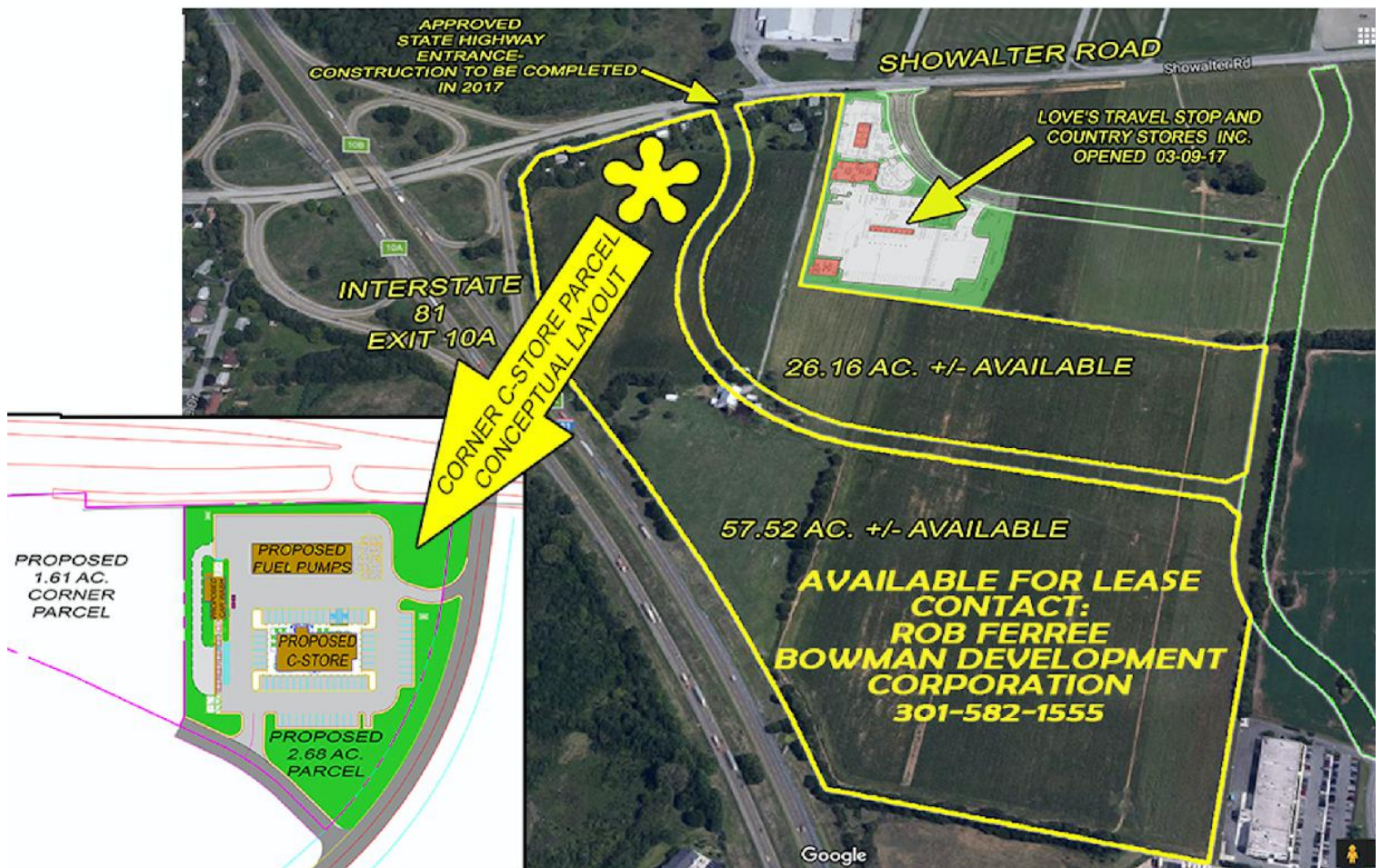


SHOWALTER COMMERCIAL PARCEL

18209 SHOWALTER RD. HAGERSTOWN, MD

2018 Q4 Update

- Interstate frontage- I-81- 55,291 VPD
- 1 AC Parcel to 88 AC Parcel Available
- First Parcel off of the Interstate Ramp
- Zoned Hi-Highway Interchange
- Fully Approved Entrance Plans
- Approved State Highway Entrance Plans
- Traffic Impact Study Approved
- Love's Travel Center NOW OPEN
- **Site Approved Entrance Completed**
- Site plan approval estimated at 6 months from notice to proceed
- Site plan approved for a large 1.2M SF distribution center nearby



For leasing information:
Rob Ferree

p. 301-223-1090

e. rferree@dm Bowman.com