

# GREENCASTLE PIKE

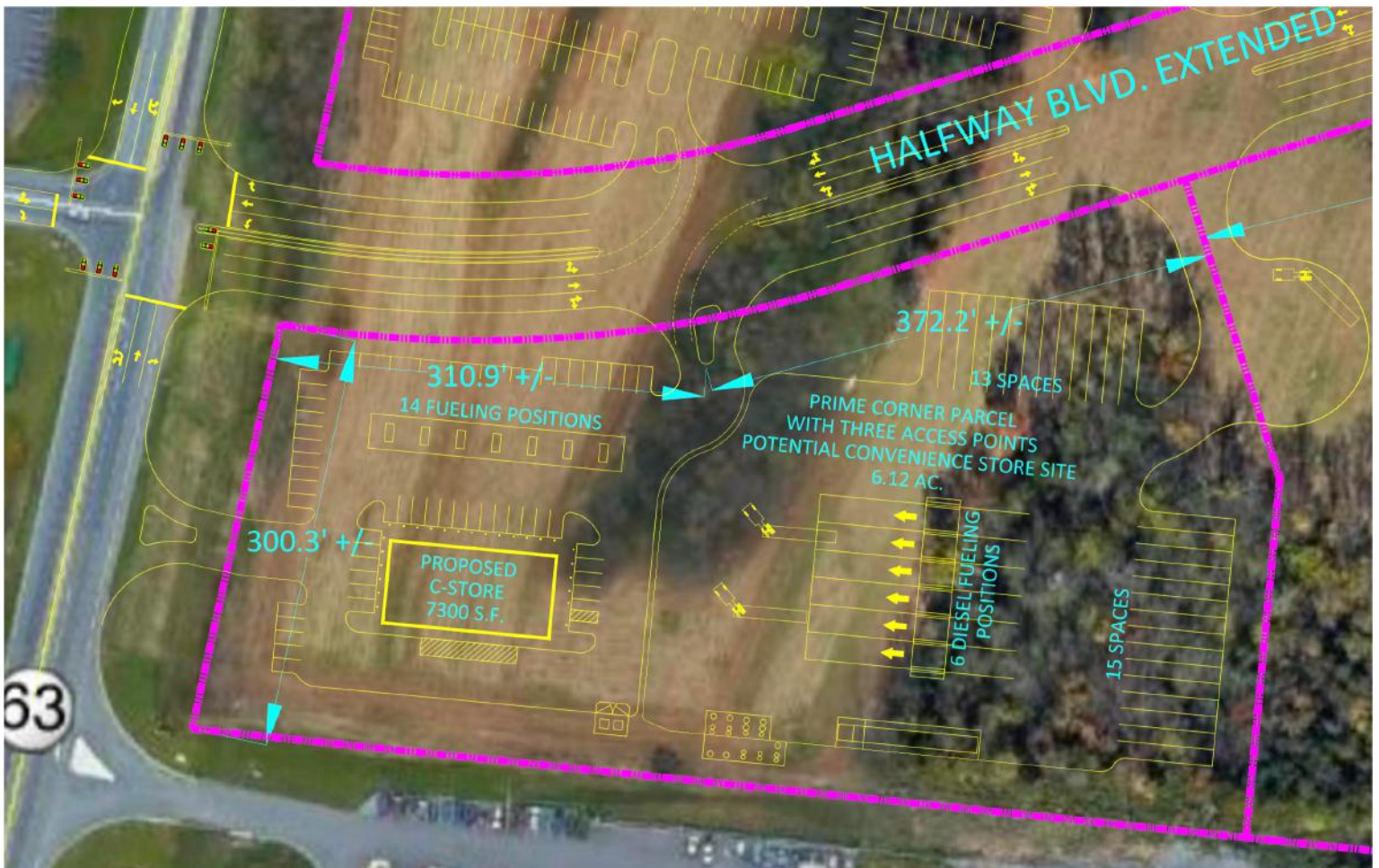
11901 GREENCASTLE PIKE HAGERSTOWN, MD 21740

COMING SOON- I-81 DIRECT ACCESS AT EXIT 5

- Prime 6.5 -12.8 acre corner site with proposed traffic signal
- Halfway Blvd. Extended is funded and under design
- Current Traffic Counts:  
I-81 (Exit 5) 77,341 VPD  
I-70 (Exit 24) 40,701 VPD  
MD-63 10,015 VPD
- Zoned Highway Interchange
- Area has a high concentration of large distribution operations. High level of truck traffic

## 2018 Q4 Update

- **County with Bowman support has funding to extend Halfway Blvd. to Greencastle Pike (MD 63) scheduled to start 1st quarter 2019 providing direct access to I-81 w existing access to I-70**
- Projected VPD upon completion of Halfway Blvd. Extended  
Halfway Blvd- 10,960 VPD  
MD 63- 21,010 VPD
- Site plan approval estimated at 9-12 months from notice to proceed



For leasing information:  
Rob Ferree

p. 301-223-1090

e. rferree@dmbowman.com



# Overall Development Concept Plan

