

PAD SITE *Hagerstown, MD*

11903 Greencastle Pike, Hagerstown, MD

Westgate- A 175 acre industrial park to be developed at the western edge of the successful Hopewell Valley Industrial Area. Ground lease and build to suit opportunities available.

Halfway Blvd. extended to be started in the Spring 2022 and is projected to be finished by the end of 2023 providing direct access to Exit 5 on I-81.



HIGHLIGHTS

- Located just west of the large FedEx Ground Regional Distribution Center and just northeast of the new FedEx Freight facility.
- Great C-Store or Truck Stop location at MD-63 and Halfway Blvd
- Located near major distribution and manufacturing facilities; including Lenox, Home Depot, Staples, Tractor Supply, Cinetic Landis, Pavestone
- Easy access to I-70 and I-81
- Located in the State Enterprise Incentive Zone



For leasing information:

Rob Ferree

p. 301-223-1090

e. rferree@dmbowman.com

PAD SITE *Hagerstown, MD*

11903 Greencastle Pike, Hagerstown, MD

CURRENT TRAFFIC COUNTS

I-81- 77,341 VPD

I-70- 40,701 VPD

Halfway Blvd- 7,800 VPD

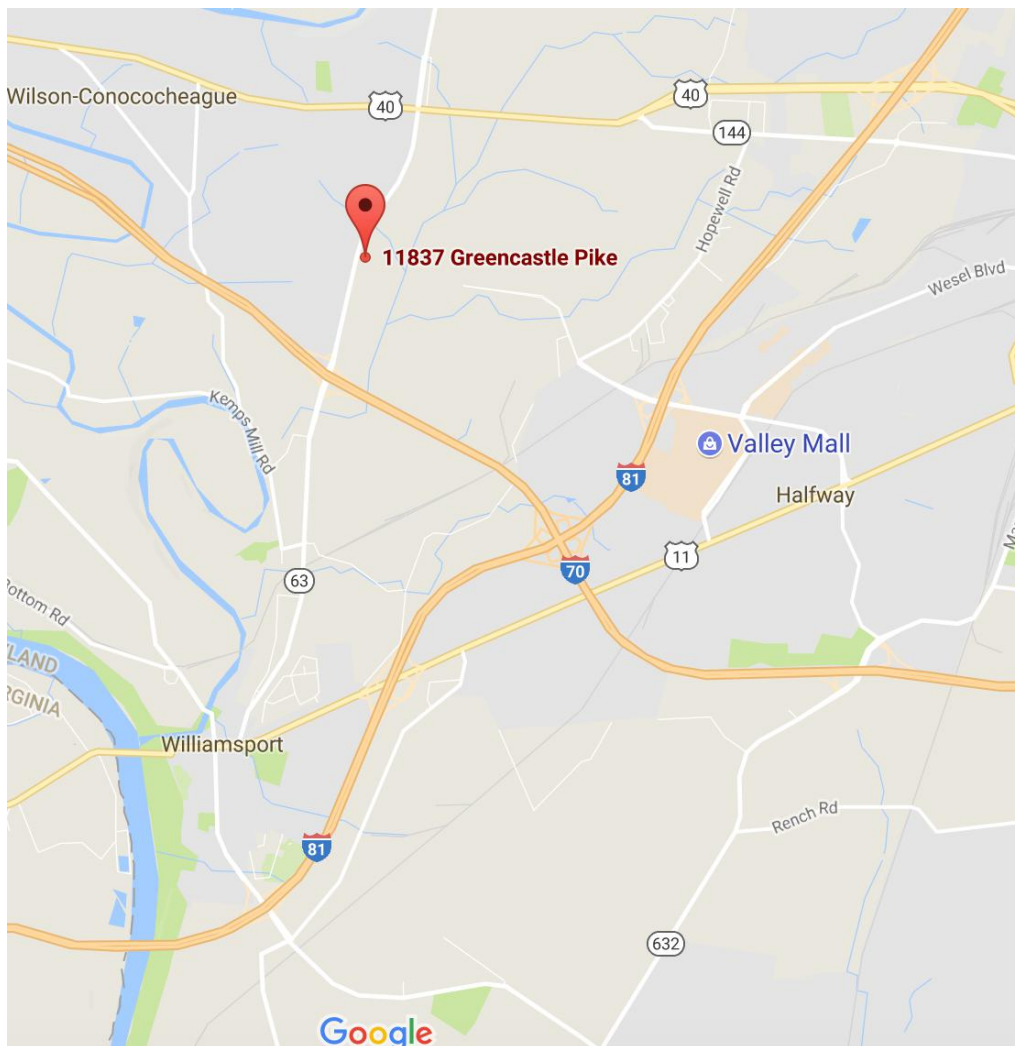
MD-63- 10,065 VPD

PROJECTED TRAFFIC COUNTS

upon completion of Halfway Blvd.

Halfway Blvd- 10,960 VPD

MD-63- 21,010 VPD



DEMOGRAPHICS

3 miles

5 miles

TRADE AREA

Population

18,488

63,123

261,486

Avg, HH Income

\$64,928

\$59,763

\$55,142



For leasing information:

Rob Ferree

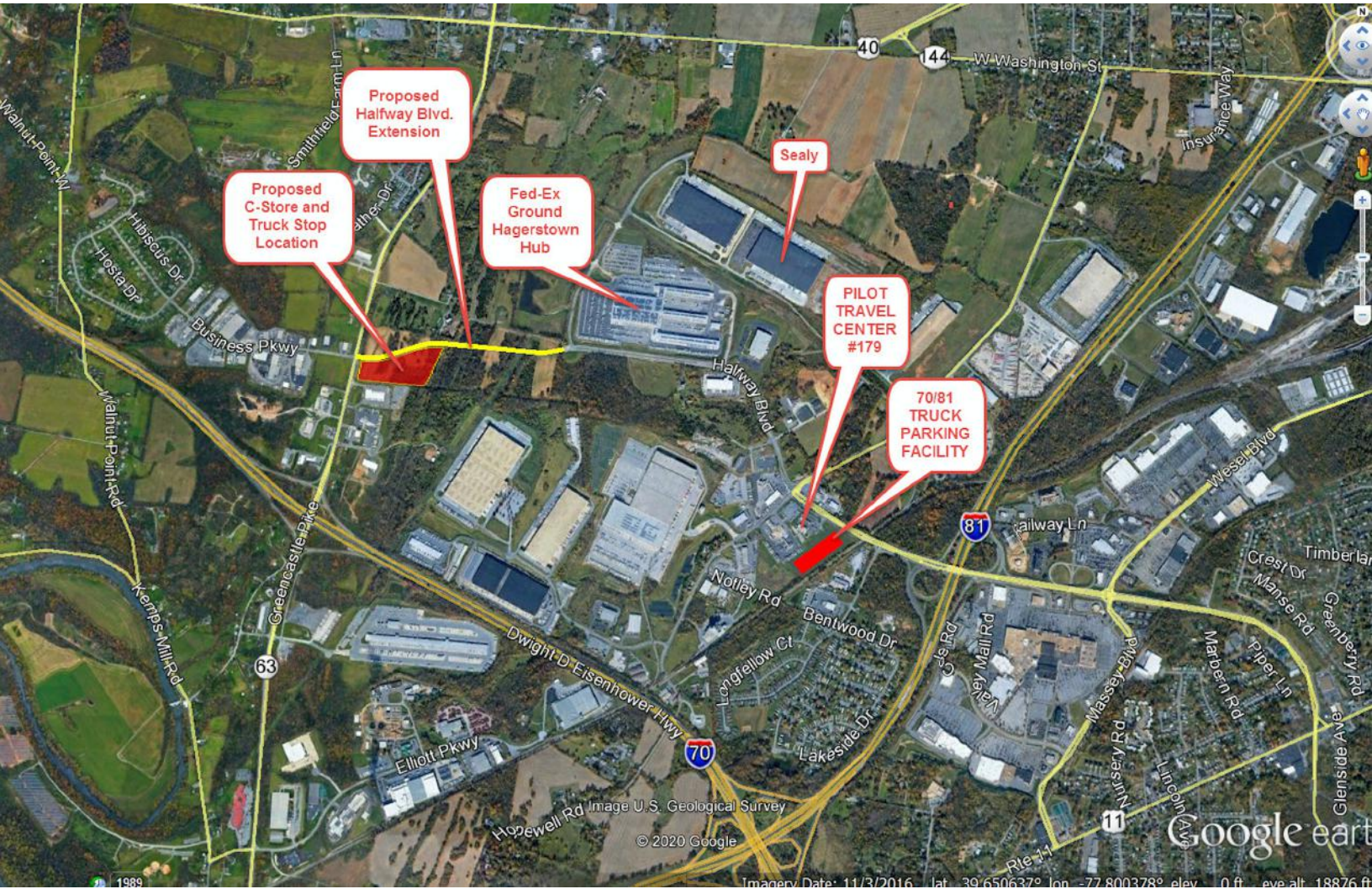
p. 301-223-1090

e. rferree@dmbowman.com

PAD SITE *Hagerstown, MD*

11903 Greencastle Pike, Hagerstown, MD

The Hopewell Valley Industrial Park



For leasing information:

Rob Ferree

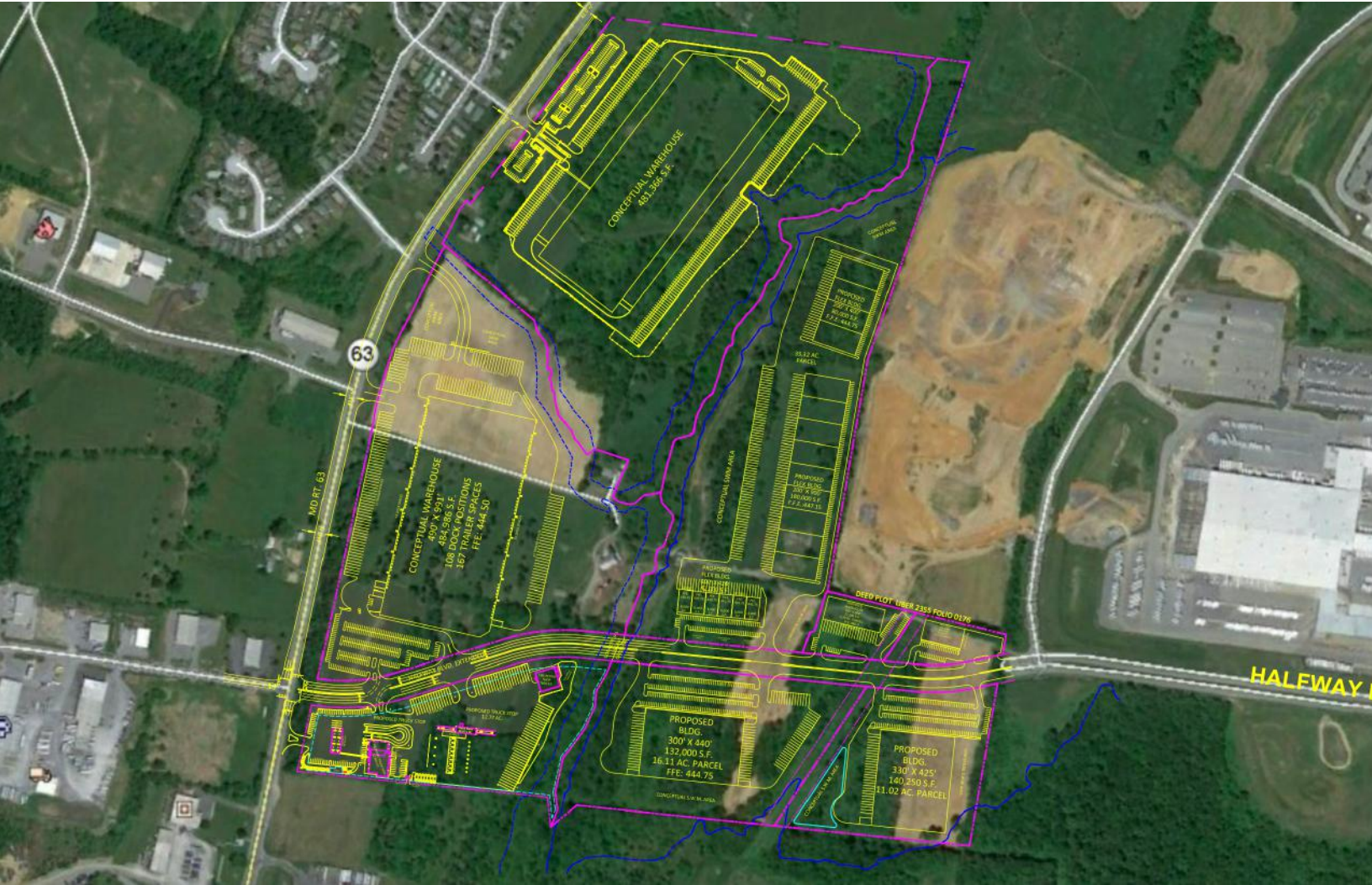
p. 301-223-1090

e. rferree@dmbowman.com

PAD SITE *Hagerstown, MD*

11903 Greencastle Pike, Hagerstown, MD

Full Westgate Industrial Park Concept



For leasing information:

Rob Ferree

p. 301-223-1090

e. rferree@dmbowman.com