

PAD SITE *Hagerstown, MD*

11903 Greencastle Pike, Hagerstown, MD

A 175 acre industrial park to be developed at the western edge of the successful Hopewell Valley Industrial Area.

Halfway Blvd. extended to be started in the Spring 2019 and is projected to be finished by the Summer of 2022.



HIGHLIGHTS

- Great C-Store location at MD-63 and Halfway Blvd
- Located near major distribution and manufacturing facilities; including Lenox, Home Depot, Staples, Tractor Supply, Cinetic Landis, Pavestone
- Located just west of the successful and expanding FedEx Ground Regional Distribution Center and just northeast of the new FedEx Freight facility.
- Approved SHA entrance to be constructed in Spring of 2018
- Easy access to I-70 and I-81
- Located in the State Enterprise Incentive Zone

PAD SITE *Hagerstown, MD*

11903 Greencastle Pike, Hagerstown, MD

CURRENT TRAFFIC COUNTS

I-81- 77,341 VPD

I-70- 40,701 VPD

Halfway Blvd- 7,800 VPD

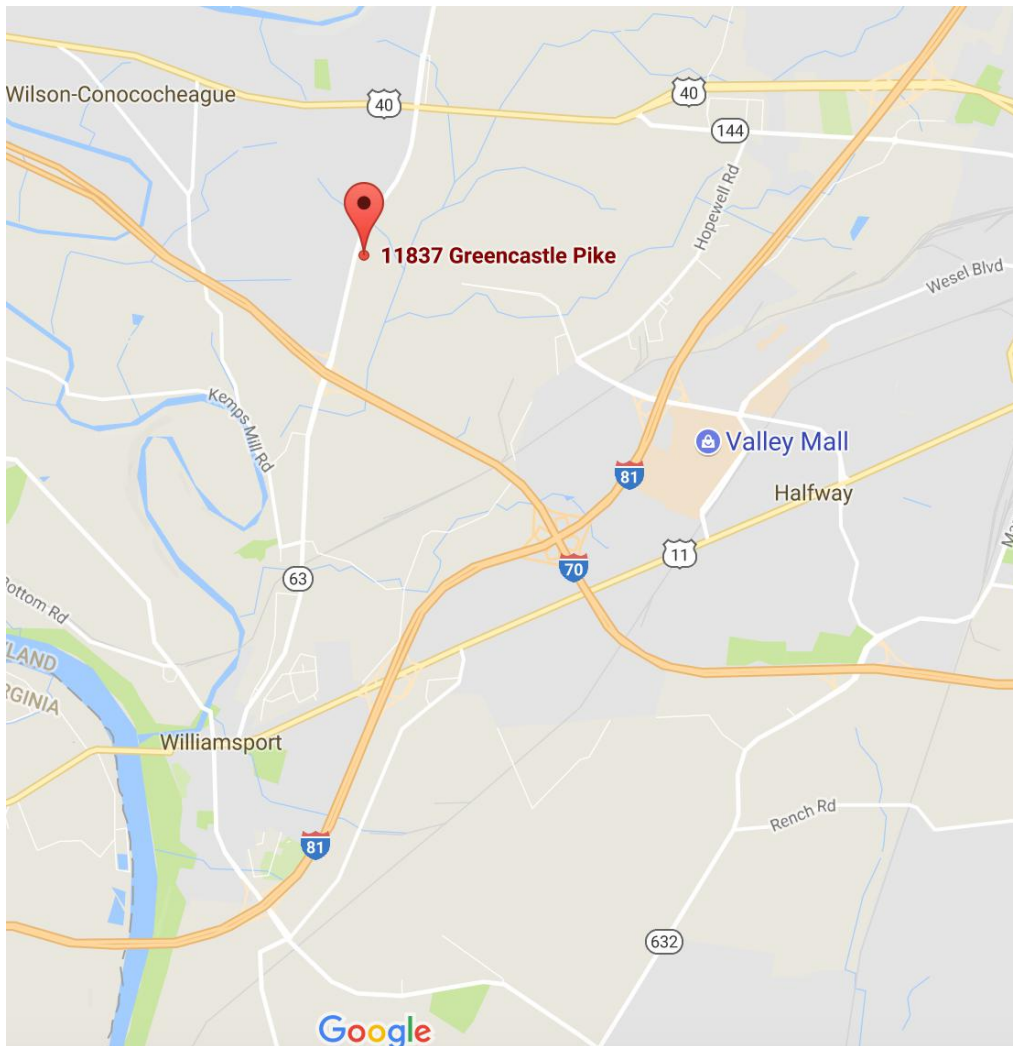
MD-63- 10,065 VPD

PROJECTED TRAFFIC COUNTS

upon completion of Halfway Blvd.

Halfway Blvd- 10,960 VPD

MD-63- 21,010 VPD



DEMOGRAPHICS

3 miles

5 miles

TRADE AREA

Population

18,488

63,123

261,486

Avg, HH Income

\$64,928

\$59,763

\$55,142



For leasing information:

Rob Ferree

p. 301-223-1090

e. rferree@dmbowman.com

PAD SITE *Hagerstown, MD*

11903 Greencastle Pike, Hagerstown, MD

Concept



For leasing information:

Rob Ferree

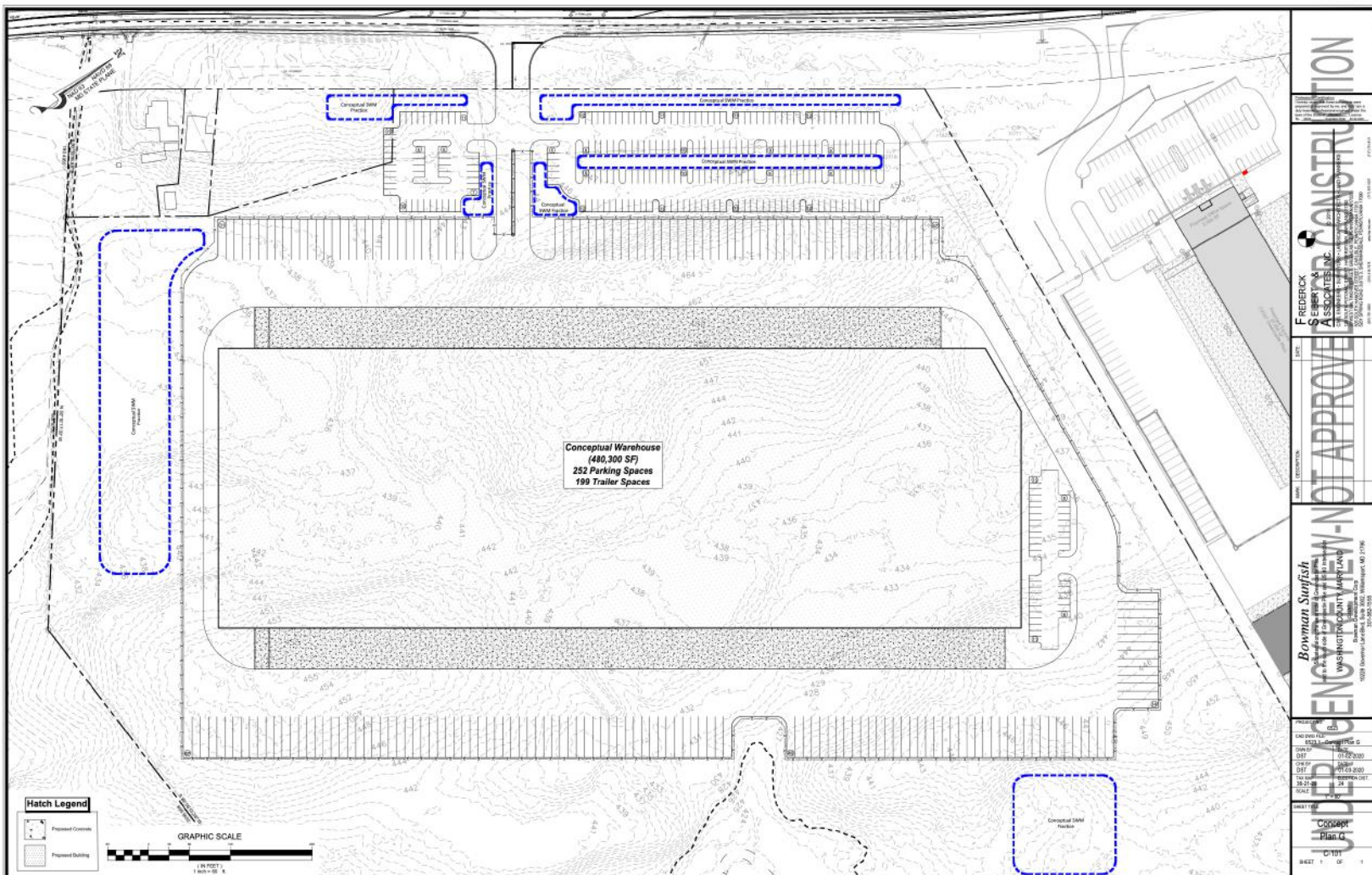
p. 301-223-1090

e. rferree@dmbowman.com

PAD SITE *Hagerstown, MD*

11903 Greencastle Pike, Hagerstown, MD

Proposed up to 480,300 SF
Distribution/Warehouse building
(Available 15-18 months)



For leasing information:

Rob Ferree

p. 301-223-1090

e. rferree@dmbowman.com