

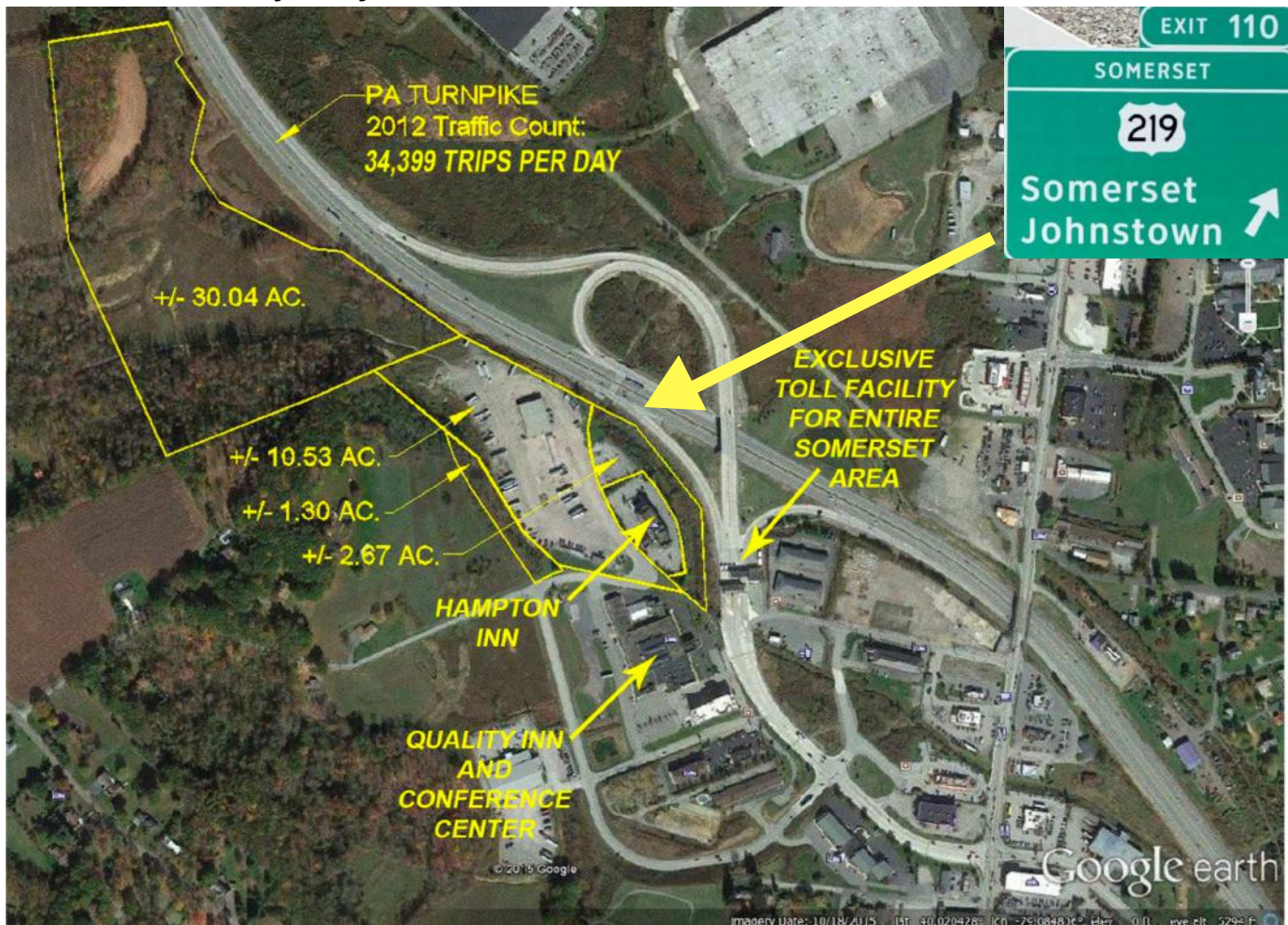
PAD SITE *Somerset, PA*

318 Laurel Crest Rd. Somerset, PA 15501

Up to 44.54 Acres of highly visible turnpike property available in Somerset, PA. Location is eligible for Pennsylvania's new Video Gaming Terminals (VGT's) law could produce \$150,000 or more in additional yearly revenue.

For Lease

Build to Suit Available



HIGHLIGHTS

- Existing popular truck diesel fueling station - with or without existing tractor repair shop
- Only truck stop between Pittsburgh and Breezewood
- 13 hotels within 1 mile
- 44 available acres
- Over 2,000 ft. of Turnpike frontage



For leasing information:

Rob Ferree

p. 301-223-1090

e. rferree@dmbowman.com

PAD SITE *Somerset, PA*

318 Laurel Crest Rd. Somerset, PA 15501



For leasing information:

Rob Ferree

p. 301-223-1090

e. rferree@dmbowman.com