

OFFICE SPACE *Williamsport, MD*

10210 Governor Lane Blvd. Williamsport, MD 21795

Bowman Business Park is a well established park with attractive brick masonry buildings with dark green metal mansard roofs visible from Interstate 81.

Outstanding Office Space Opportunity- 9,000 SF of low cost built out office spaces



HIGHLIGHTS

- Located 1 mile south of Interstate 70 on Interstate 81 between exits 1 and 2
- Great place to serve the Hagerstown, MD, Martinsburg, WV, and Chambersburg, PA markets.
- Ample parking available



For leasing information:

Rob Ferree

p. 301-223-1090

e. rferree@dmbowman.com

OFFICE SPACE *Williamsport, MD*

10210 Governor Lane Blvd. Williamsport, MD 21795

Bowman Business Park- Building 1

Currently Available:

Suite 4004 - 3,408 SF of nicely finished office and/or showroom space



HIGHLIGHTS

- 3,408 SF of nicely finished office and/or showroom space
- Beautiful custom kitchen and detailed tile work
- Ample parking within close proximity to Interstate 70 and Interstate 81



For leasing information:

Rob Ferree

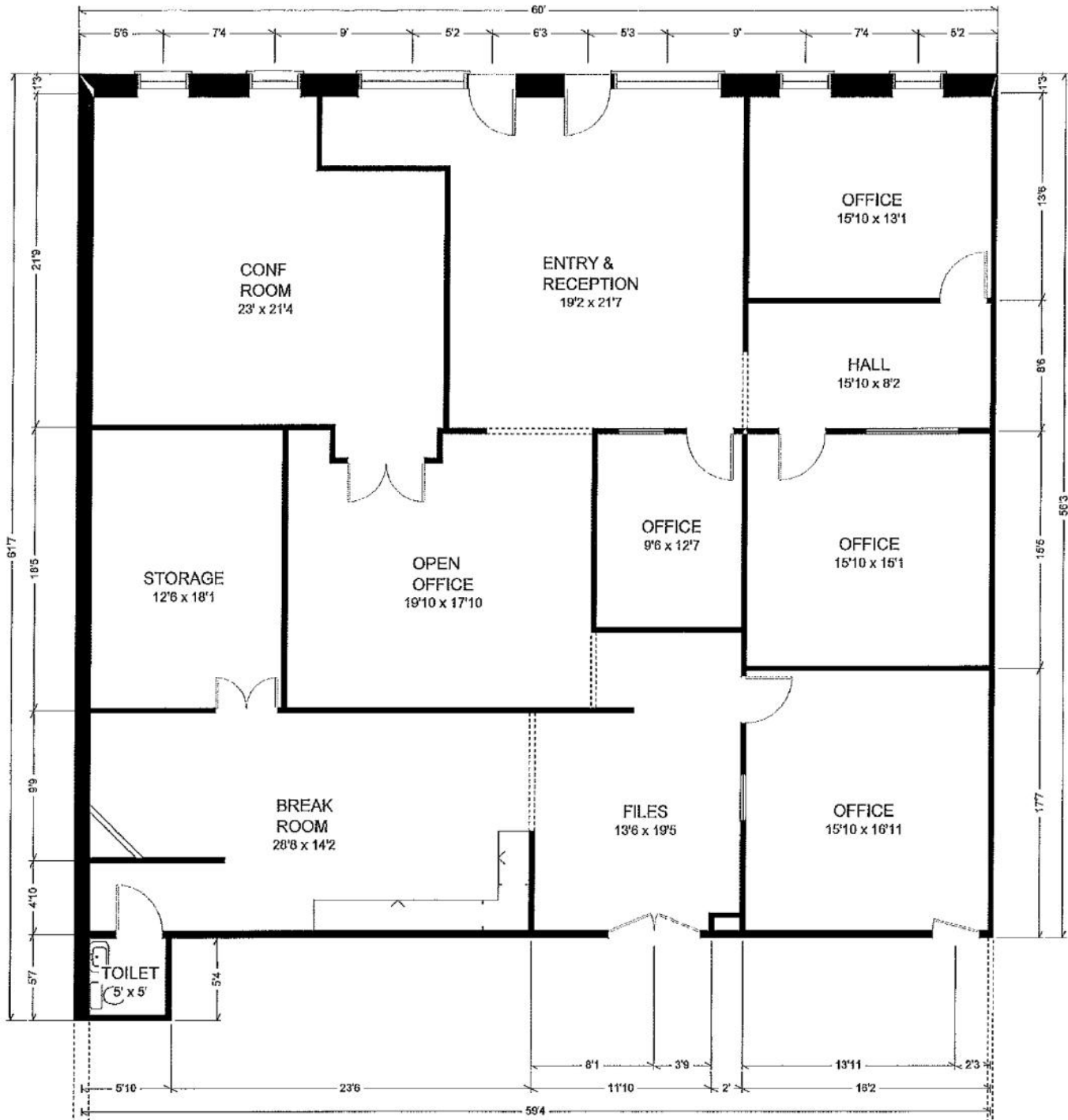
p. 301-223-1090

e. rferree@dmbowman.com

OFFICE SPACE *Williamsport, MD*

10210 Governor Lane Blvd. Williamsport, MD 21795

Floor Plan



For leasing information:

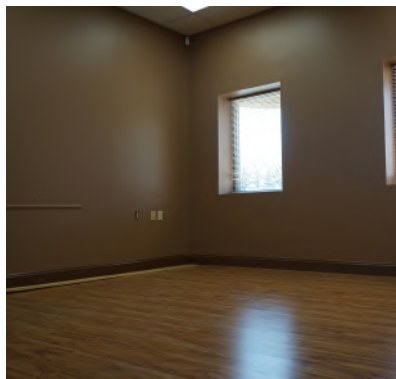
Rob Ferree

p. 301-223-1090

e. rferree@dm Bowman.com

OFFICE SPACE *Williamsport, MD*

10210 Governor Lane Blvd. Williamsport, MD 21795



For leasing information:

Rob Ferree

p. 301-223-1090

e. rferree@dmbowman.com