

PAD SITE *Williamsport, MD*

Grumbacker Lane, Williamsport MD

18.54 acre graded pad ready site
able to hold a 140,000 SF Industrial
Building

\$6.50/SF for a 10,000 SF demised
warm lit shell with a restroom.



HIGHLIGHTS

Close proximity to Interstates 70 and 81

Site plan approval

Build to suit options available



For leasing information:

Rob Ferree

p. 301-223-1090

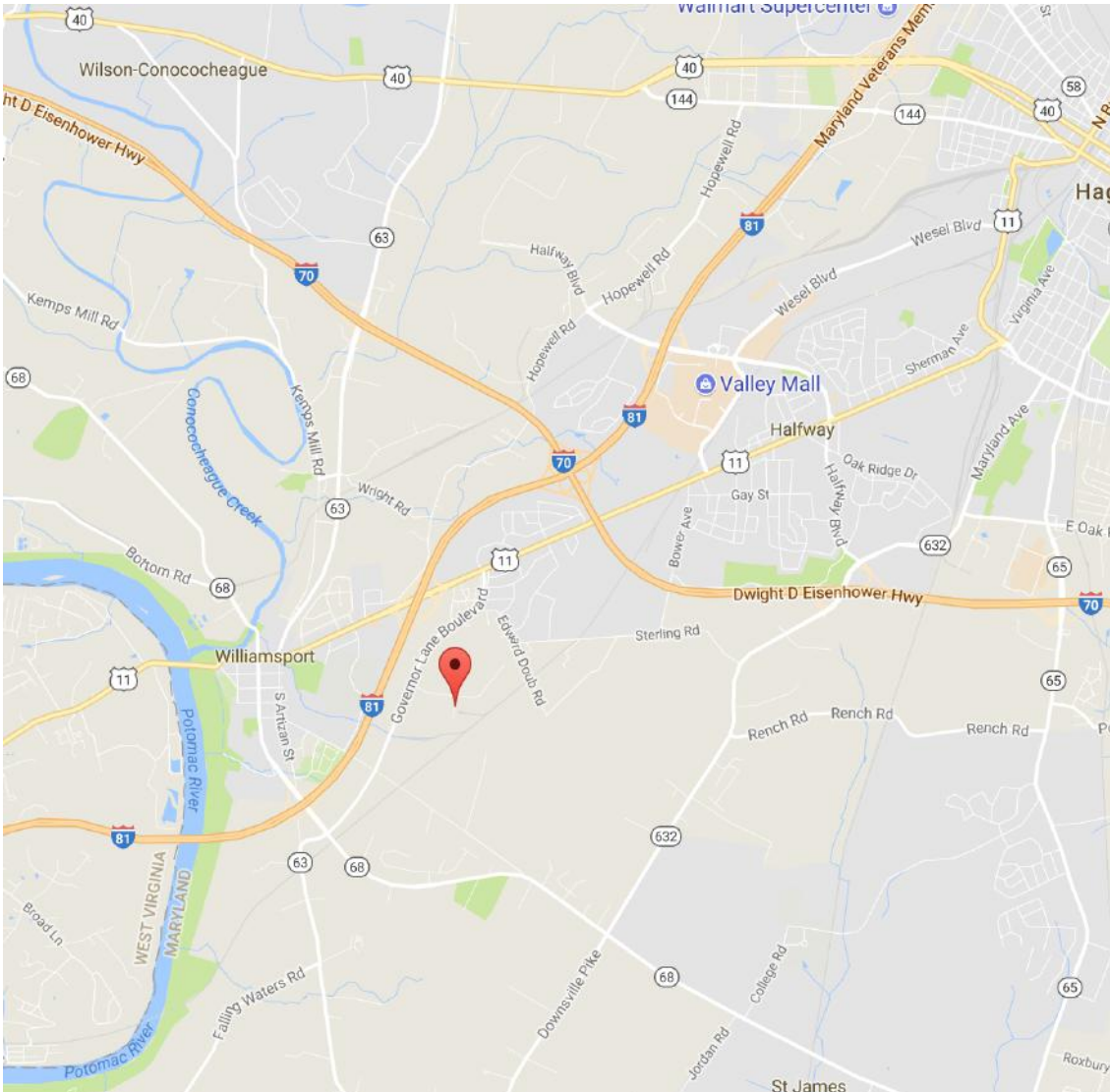
e. rferree@dmbowman.com

PAD SITE *Williamsport, MD*

Grumbacker Lane, Williamsport, MD

TRAFFIC COUNTS

I-81- 61,541



DEMOGRAPHICS

	1 mile	5 miles	10 miles
Population	13,300	38,185	261,486
Avg, HH Income	\$67,171	\$67,805	\$55,142

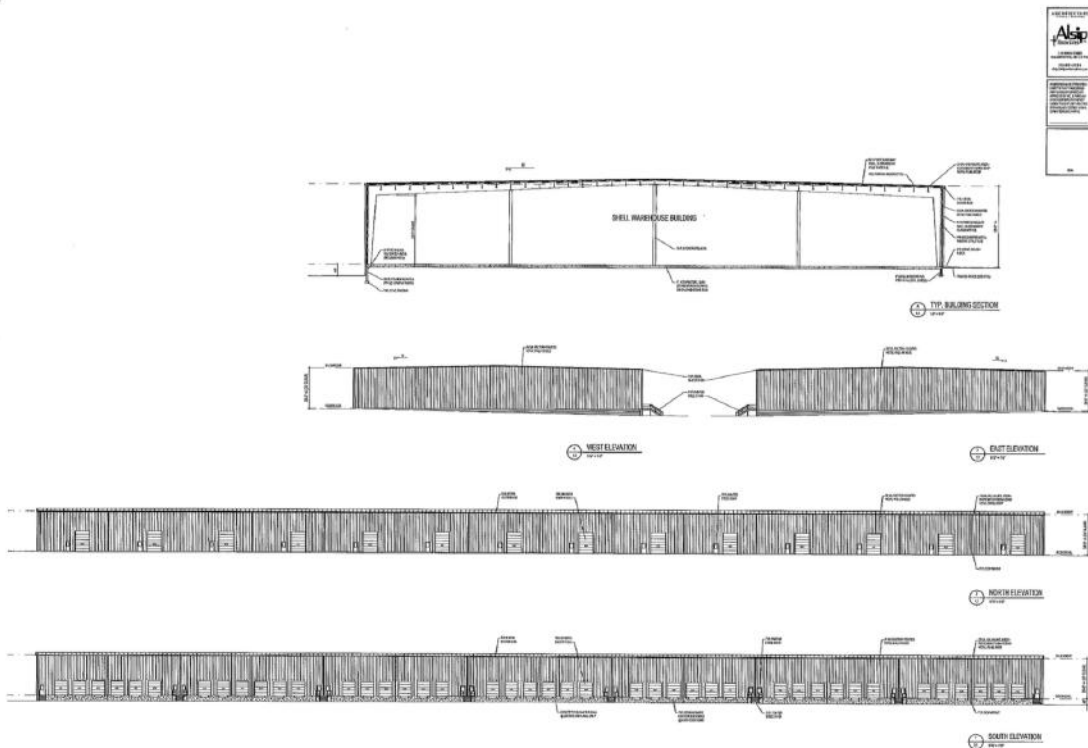
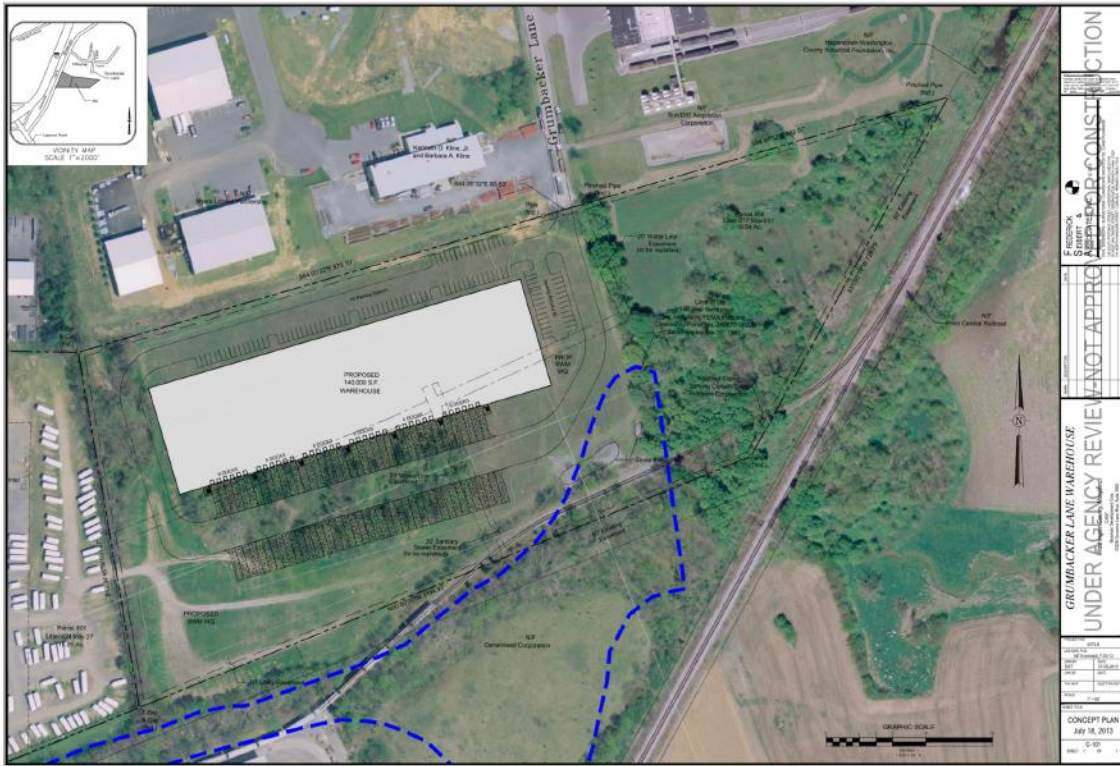


For leasing information:

Rob Ferree p. 301-223-1090 e. rferree@dmbowman.com

PAD SITE *Williamsport, MD*

Grumbacker Lane, Williamsport, MD



For leasing information:

Rob Ferree

p. 301-223-1090

e. rferree@dm Bowman.com